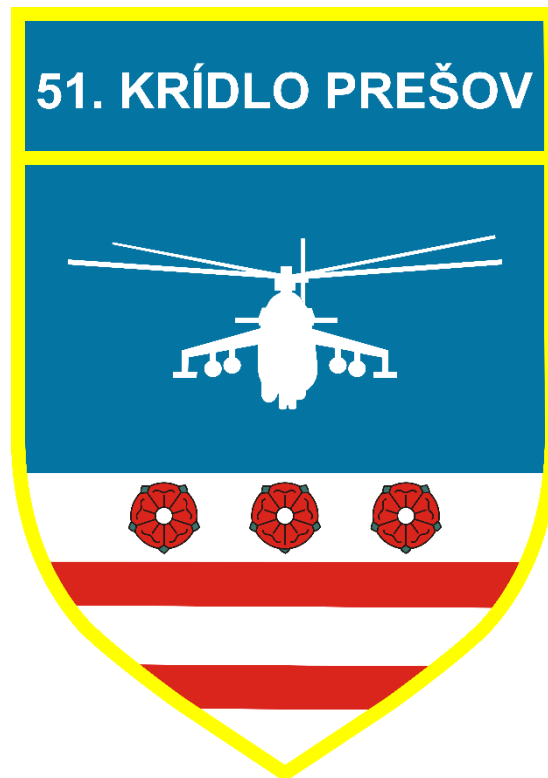


51. KRÍDLO PREŠOV
2025



PREŠOV AFB IN-FLIGHT GUIDE
RWY 05/23

Effective 19JUN25

INDEX / ADMIN / PHONE NUMBERS

INDEX

No.	Name	Valid from	Remarks
0	Cover		
1	INDEX		
2	ADMIN / PHONE NUMBERS, ATC FREQUENCIES		
3	NAVAIDS, RUNWAY, TAXIWAYS		
4	HELICOPTER LANDING AREA, AIR TRAFFIC SERVICES AIRSPACE		
5	AIR TRAFFIC SERVICES AIRSPACE		
6	LOCAL TRAFFIC REGULATIONS, FLIGHT PROCEDURES (IFR)		
7	RADAR PROCEDURES, RADIO COMMUNICATION FAILURE		
8	PROCEDURES for VFR FLIGHTS within LZR315, LZR 314		
9	PROCEDURES for VFR FLIGHTS within LZR315, LZR 314		
10	SID RWY 23	13MAY24	
11	SID RWY 05	13MAY24	
12	STAR RWY 23	13MAY24	
13	AERODROME CHART LZPW	13MAY24	
14	DEPARTURES/ARRIVALS (Coridors)	13MAY24	
15	SID RWY 05 (Chart)	13MAY24	
16	SID RWY 23 (Chart)	13MAY24	
17	STAR RWY 23 (Chart)	13MAY24	
18	NDB RWY 23 (Chart)	13MAY24	
19	PAR RWY 23 (Chart)	13MAY24	
20	VISUAL APPROACH CHART	20APR23	
21	ATC SURVEILLANCE MINIMUM ALTITUDE CHART - ICAO	13MAY24	

ADMIN

0	ICAO CODE	LZPW
1	ARP coordinates RWY 05/23	49 01 36N 021 18 18E on the axis of THR RWY 05/23
2	Magnetic variation / Annual change	6° E (2020) / +9'E
3	Elevation	1032 ft
4	Air Traffic Services	OAT H24
5	Fueling	H24
6	Fuel and oil types	JET A1 (PL7), AERO DM, ASTO 555, ASF 41
7	Fueling facilities and capacity	Tank trucks: JET A1 1 x 16 000 liters
8	AD category for fire fighters	CAT 5
9	MET briefing office (for ENG call TWR)	H24, tel.: +421 960 527 436 +421 960 527 119/206
10	FPL - AFTN Address *	
11	PPR REQ	Prior Permission Required through diplomatic channels for foreign military aircraft

* Flight plans must be sent to AFTN addresses - LZIBZPZX (CARO Bratislava) and LZPW**ZTZX** (Prešov TWR)

PHONE NUMBERS

Name	Number	e-mail
Wing Commander	tel: +421 960 527 100	stefan.okos@mil.sk
TWR	tel: +421 960 527 206	lzpw.tower@mil.sk
APP	tel: +421 960 527 415	repar@mil.sk
MET briefing office	tel: +421 960 527 436	lms-presov@mil.sk
Emergency Services Civilian (Police, Fire, Ambulance)	112	
Address	VÚ 6335, Vranovská 68, 080 01 Prešov	

ATC FREQUENCIES

Service designation	Call sign	Frequency	Operation Hours	Remarks
RC TWR	Prešov TOWER	135,500 MHz	H24	
RC APP	Prešov RADAR	134,325 MHz	HO	
RC PAR	Prešov PRECISION	397,050 MHz	H24	

NAVIGATIONAL AIDS

TYPE	ID	Frequency	Operation Hours	Coordinates	Remarks
NDB	P	571 kHz	H24	49 01 57,18 N	054° GEO 1 000 m FM THR RWY 23 RNG 20 NM
				021 19 04,04 E	
MM	dot/dash	75 MHz	H24	49 01 57,18 N	054° GEO 1 000 m FM THR RWY 23
				021 19 04,04 E	
TACAN/ DME	PRH	80 X	H24	49 06 05,8 N	RNG 200 NM
				021 22 40,6 E	

RUNWAY

RWY	TRUE and MAG bearing	Dimensions of RWY (m)	Strength (PCN) and Surface of RWY	THR Coordinates	THR Elevation
05	054,32° GEO 048,49° MAG	297 x 20	PCN - concrete 25R/B/W/U SWY-NIL	49 01 33 N 021 18 12 E	1 029 ft (313,61 m)
23	234,32° GEO 228,49° MAG	297 x 20	PCN - concrete 25R/B/W/U SWY-NIL	49 01 38 N 021 18 24 E	THR 1 035 ft / 315,46 m TDZ 1 032 ft / 314,55 m

RWY	TORA (m)	TODA (m)	ASDA (m)	LDA (m)	Remarks
05	297	447	297	297	NIL
23	297	447	297	297	NIL

TAXIWAYS

TWY	Width (m)	Surface	Strength	Remarks
A, B, C	10	Concrete	25/R/B/W/U	
D	8	Concrete	25/R/B/W/U	
E	10	Grass	6 600 kg / 4,8 MPa	

HELICOPTER LANDING AREA

Coordinates TLOF or THR of FATO	H: 490135,55N 0211818,22E
Geoid undulation	39,5 m
TLOF and/or FATO elevation	H: ELEV 1 032 ft (314 m)
TLOF and FATO area dimensions, surface, strength, marking	H: white letter H, concrete, PCN 25/R/B/W/U; TLOF: white dashed rectangle, 18 x 18 m.
TRUE and MAG BRG of FATO	054°/234° GEO 048°/228° MAG
Declared distances available	NIL
APCH and FATO lighting	NIL
Remarks	In the center of the concrete RWY 05/23

AIR TRAFFIC SERVICES AIRSPACE

LZR 315

Designation and lateral limits	LZR 315 490950N 0212700E 490429N 0213352E 485613N 0212646E 485348N 0212442E 485545N 0211158E 485845N 0211010E 490042N 0210900E circular arc 5,7 NM around 490246N 0211704E to 490821N 0211521E 490950N 0212700E
Vertical limits	<u>5 000 ft AMSL</u> GND
Airspace classification	D
ATS unit call sign / language	PREŠOV TOWER
Transition altitude	10 000 ft AMSL
Remarks	NIL

LZR 415

Designation and lateral limits	LZR 415 490950N 0212700E 490429N 0213352E 485613N 0212646E 485721N 0211919E 485845N 0211010E 490042N 0210900E circular arc 5,7 NM around 490246N 0211704E to 490821N 0211521E 490950N 0212700E
Vertical limits	<u>8 000 ft AMSL</u> 5 000 ft AMSL
Airspace classification	D
ATS unit call sign / language	PREŠOV RADAR
Transition altitude	10 000 ft AMSL
Remarks	NIL

LOCAL TRAFFIC REGULATIONS

Taxiing to and from stands

- In accordance with Prešov TWR instructions the pilot is taxiing to the designated stand and by assistance of marshaller.

Parking area for helicopters

- Available, concrete surface. Parking in accordance with TWR instructions.

Taxiing during winter conditions

- In accordance with TWR and marshaller instructions.

Taxiing – limitations

- TWY D closed for operations, used only for pulling of aircraft.

FLIGHT PROCEDURES

GENERAL

- Flights can penetrate area LZR315 and LZR 415 only after approval obtained from Prešov TWR. Such approval shall be obtained at least 3 minutes in advanced. The pilot-in-command shall maintain air-ground voice communication watch on the Prešov TOWER FREQ 135,500 MHz, Prešov RADAR FREQ 134,325 MHz.

RWY IN USE

- RWY in use is selected by Prešov TWR as the best for general purposes. If it is unsuitable for the particular operation, the pilot can obtain permission from ATC to use another one, but must accept that he may thereby incur a delay.

PROCEDURES FOR IFR FLIGHTS WITHIN LZR 315, LZR 415

a) Holding

Holding procedures are described and shown on Instrument Approach Chart – ICAO (page AD 2-LZPW-7-1).

b) Arriving flights

Standard instrument approach procedures are described and shown on Standard Arrival Charts (STAR) – ICAO (page AD 2-LZPW-6-1).

Initial, intermediate, final and missed approach procedures are described and shown on Instrument Approach Chart – ICAO (page AD 2-LZPW-7-1).

c) Circling approach

OCA/OCH for RWY 05/23 – see Instrument Approach Chart (page AD 2-LZPW-7-1).

IFR Circling approach – NOT APPLICABLE.

VFR circuit approach for RWY 05, when Instruments Approach for RWY 23 at altitude 1650 ft AMSL is completed, execute by overflying NDB P followed by joining low right circuit for RWY 05 at 500 ft AGL.

d) Departing flights

Pilot on departing aircraft shall request start up clearance, when they are ready to start engines. Start-up request shall be passed on PREŠOV TOWER FREQ.

The request for taxi clearance shall be passed on Prešov TWR.

Departure procedures are described and shown on Standard Departure Charts – Instrument (SID) – ICAO (pages AD 2-LZPW-5-1, AD 2-LZPW-5-3).

Non-standard clearances on these or other routes may be issued by ATS. Pilots unable to comply with the SID or non-standard clearances issued, must inform ATC prior to take-off and request an alternative clearance.

While operating on SID a first contact with Prešov APP should include at least the following items of information:

- a) call sign
- b) SID name and number
- c) current altitude or flight level.

RADAR PROCEDURES

- Radar service in LZR315 and LZR415 is provided by PREŠOV RADAR. In case that the radar services could not be provided pilot will be informed by ATS in the first radio contact.
- Aircraft will be vectored in sequence from reporting points DUFES, GIRAB, HANEZ, KOJOT, RATWA to the appropriate NDB approach track, to ensure an expeditious flow of air traffic. Radar vectors and flight levels/altitudes will be issued, as required for spacing and separating the aircraft, taking into account aircraft characteristics.
- Pilot finding that he can see the ground before he has completed the instrument approach procedure, must nevertheless carry out the entire procedure, unless he specifically requests and ATC gives him permission to complete his approach visually.
- This permission will be given only when:
 - a) the pilot confirms that he is able to maintain visual reference to the surface,
 - b) the reported cloud ceiling is not below the initial approach level or pilot reports that visibility will permit a visual approach and he is reasonably confident that a landing can be accomplished.

RADIO COMMUNICATION FAILURE

- See Part 2 - ENR, para. ENR 1.1.17.8.1.

PROCEDURES for VFR FLIGHTS within LZR315, LZR314

- Provided that traffic situation makes it possible, an ATC clearance for VFR flight will be issued under the conditions described in the following provisions.

a) Arriving flights and overflights

- I. Two-way radio contact shall be established 3 minutes before entering LZR315 and LZR415 on PREŠOV TOWER / PREŠOV RADAR
FREQ
- II. A deviation from an ATC clearance may be executed only when prior approval has been obtained from PREŠOV VEŽA / PREŠOV RADAR
- III. Pilots shall pass their position report as required.

b) Departing flights

The pilot shall establish two-way radio contact on FREQ PREŠOV TOWER and shall proceed in compliance with ATC clearance received.

c) Local flight activity

When requesting taxi clearance, the pilot shall proceed as follows:

- I. Establish two-way radio contact on FREQ PREŠOV TWR 135,500 MHz
- II. Pass following flight plan data:
 - a. aircraft identification,
 - b. type of aircraft
 - c. operating area, level (level block), activity description and its anticipated duration,
 - d. aerodrome of arrival (when other than the aerodrome of departure).

d) Holding

Aircraft may be required to hold at a specific geographical location.

e) VFR entry and exit points to/from LZR315, LZR415

VFR entry and exit points to/from LZR315, LZR415	
V (Svinia)	49°00'35'' N 021°07'31'' E
R (Raslavice)	49°08'54'' N 021°19'25'' E
G (Giraltovce)	49°06'42'' N 021°31'09'' E
H (Hanušovce nad Topľou)	49°01'19'' N 021°30'07'' E
T (Petrovany)	48°55'03'' N 021°15'37'' E

All VFR flights to/from the LZR315 and LZR415 shall be carried out only via established entry and exit points unless appropriate ATS unit states otherwise.

Pilots of VFR flight are reminded of the requirements to remain in VMC at all times and must advise ATC if at any time they are unable to comply with the instructions issued.

f) VFR navigational points in LZR315, LZR415

VFR navigational points in LZR315 a LZR415	
November	49°03'58'' N 021°19'45'' E
Echo	49°01'04'' N 021°21'17'' E
Sierra	48°59'53'' N 021°18'02'' E
Whiskey	49°02'07'' N 021°16'04'' E
Bravo	49°01'35'' N 021°12'32'' E
Charlie	48°57'30'' N 021°17'38'' E
Delta	49°02'42'' N 021°26'28'' E

g) Corridors for VFR flights in LZR315, LZR415

Corridor	Entry point into LZR315	Route	End point	Altitude Departure / Arrival (ft AMSL)
Romeo	Romeo	Romeo – November	November	2500 / 3000
Golf	Golf	Golf – Delta – Echo	Echo	2500 / 3000
Hotel	Hotel	Hotel – Delta – Echo	Echo	2500 / 3000
Tango	Tango	Tango – Charlie – Sierra	Sierra	2500 / 3000
Viktor	Viktor	Viktor – Bravo – Whiskey	Whiskey	2500 / 3000

Corridors in LZR315 a LZR415 are designated for helicopter flow during performing flight operations. Flight altitude can be set via ATC in regard to actual airspace situation. PIC is authorized to request for change in flight clearance.

STANDARD INSTRUMENTS DEPARTURES

(SID) – RWY 23

Designation	Track	After take-off		Remarks
		Climb to	Communication	
KOJOT 1A	Climb on CRS 239° to TP (8,2 DME PRH/QDR 238° NDB P), turn right to track 071° (QDM 071° NDB P) to NDB P, turn right to CRS 252° to TP, intercept track 238° (QDR 238° NDB P) to KOJOT.	by ATC	PREŠOV RADAR 134,325 MHz	RESTRICTION: To remain in controlled airspace increase climb gradient to 7,5 % to 8 500 ft AMSL. MAX IAS 80 kts.
DUFES 1A	Climb on CRS 239° to TP (8,2 DME PRH/QDR 238° NDB P), turn right to track 071° (QDM 071° NDB P) to NDB P, turn right to track 174° (QDR 174° NDB P) to DUFES.	by ATC		MAX IAS 80 kts
HANEZ 1A	Climb on CRS 239° to TP (8,2 DME PRH/QDR 238° NDB P), turn right to track 071° (QDM 071° NDB P) to NDB P, turn right to track 084° (QDR 084° NDB P) to HANEZ.	by ATC		MAX IAS 80 kts
GIRAB 1A	Climb on CRS 239° to TP (8,2 DME PRH/QDR 238° NDB P), turn right to track 071° (QDM 071° NDB P) to NDB P, turn left to track 053° (QDR 053° NDB P) to GIRAB.	by ATC		MAX IAS 80 kts
RATWA 1A	Climb on CRS 239° to TP (8,2 DME PRH/QDR 238° NDB P), turn right to track 071° (QDM 071° NDB P) to NDB P, turn left to track 356° (QDR 356° NDB P) to RATWA.	by ATC		MAX IAS 80 kts

(SID) – RWY 05

Designation	Track	After take-off		Remarks
		Climb to	Communication	
KOJOT 1B	Climb to NDB P, turn right to CRS 251°, intercept track 238° (QDR 238° NDB P) at TP (8,2 DME PRH) to KOJOT	by ATC	PREŠOV RADAR 134,325 MHz	RESTRICTION: Climb gradient 13,8 % to 8 500 ft AMSL to remain in controlled airspace. MAX IAS 80 kt.
DUFES 1B	Climb to NDB P, turn right to CRS 251°, intercept QDR 238° NDB P at TP (8,2 DME PRH), turn right to track 072° (QDM 072° NDB P) to NDB P, turn right to track 174° (QDR 174° NDB P) to DUFES.	by ATC		
HANEZ 1B	Climb to NDB P, turn right to CRS 251°, intercept QDR 238° NDB P at TP (8,2 DME PRH), turn right to track 072° (QDM 072° NDB P) to NDB P, turn right to track 084° (QDR 084° NDB P) to HANEZ	by ATC		
GIRAB 1B	Climb to NDB P, turn right to CRS 251°, intercept QDR 238° NDB P at TP (8,2 DME PRH), turn right to track 072° (QDM 072° NDB P) to NDB P, turn left to track 053° (QDR 053° NDB P) to GIRAB.	by ATC		
RATWA 1B	Climb to NDB P, turn right to CRS 251°, intercept QDR 238° NDB P at TP (8,2 DME PRH), turn right to track 072° (QDM 072° NDB P) to NDB P, turn left to track 356° (QDR 356° NDB P) to RATWA.	by ATC		

STANDARD INSTRUMENTS ARRIVALS

(STAR) – RWY 23

Significant Points	MAG Track	Distance NM / km	MNM IFR altitude ft AMSL	Remarks
KOJOT 1Z REP KOJOT 485830N 0210833E 11,0 DME PRH NDB P 490157N 0211904E	058° (QDM 058° NDB P) 058° (QDM 058° NDB P)	1,1 / 2 7,8 / 14,5	8500 4 000	ACFT CAT H only
DUFES 1Z REP DUFES 485723N 0211908E NDB P 490157N 0211904E	354° (QDM 354° NDB P)	4,6 / 8,5	4 800	
HANEZ 1Z REP HANEZ 490155N 0213139E NDB P 490157N 0211904E	264° (QDM 264° NDB P)	8,3 / 15,4	4 900	
GIRAB 2Z REP GIRAB 490640N 0213104E IAF KORZA 490630N 0212844E	258°	1,5 / 2,8	3 500	
RATWA 1Z REP RATWA 490852N 0211925E NDB P 490157N 0211904E	176° (QDM 176° NDB P)	6,9 / 12,8	4 200	

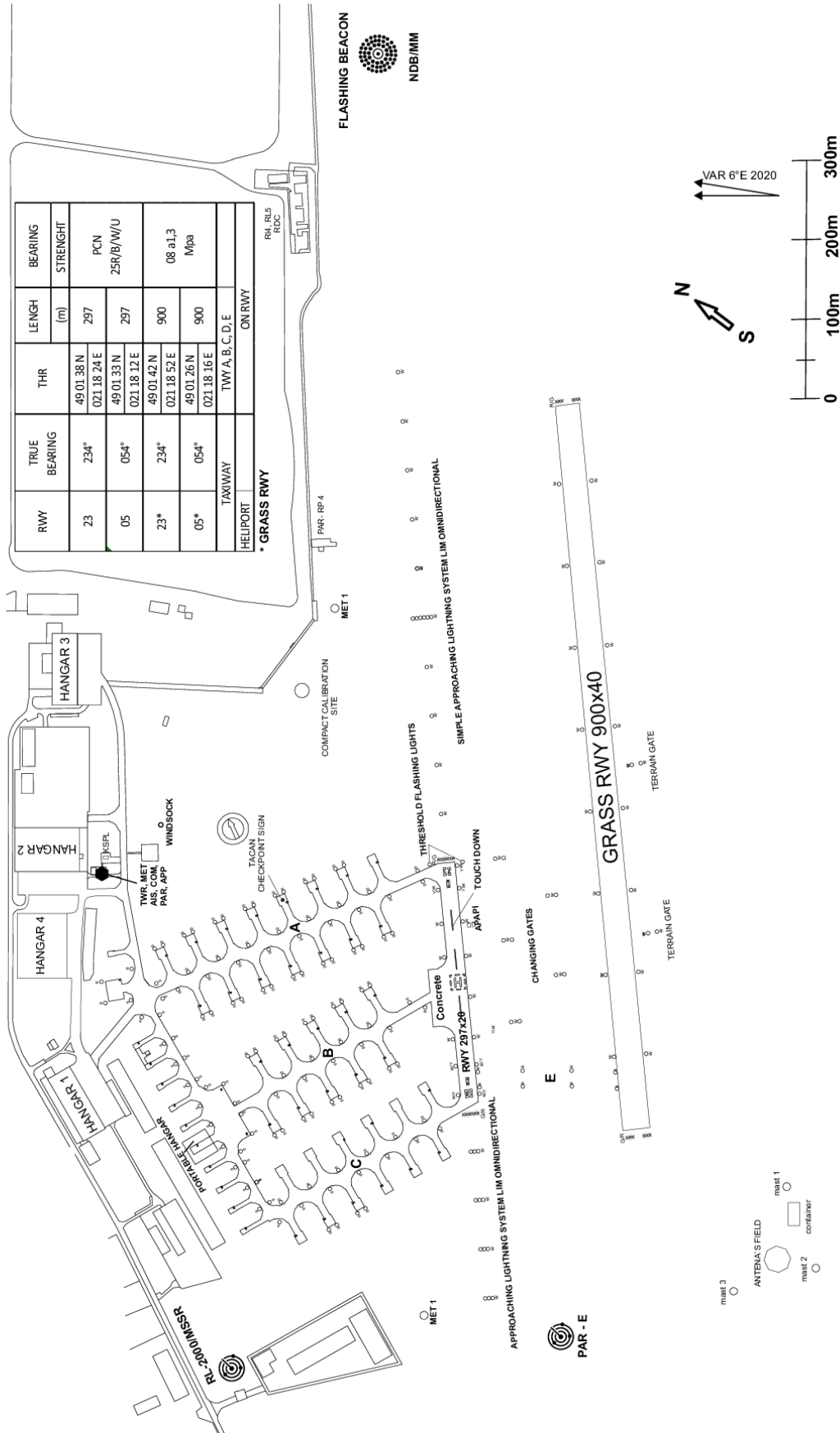
AERODROME CHART

AERODROME
PREŠOV

49°01'36''N
021°18'18''E

ELEV 1032 ft

TWR 135,500

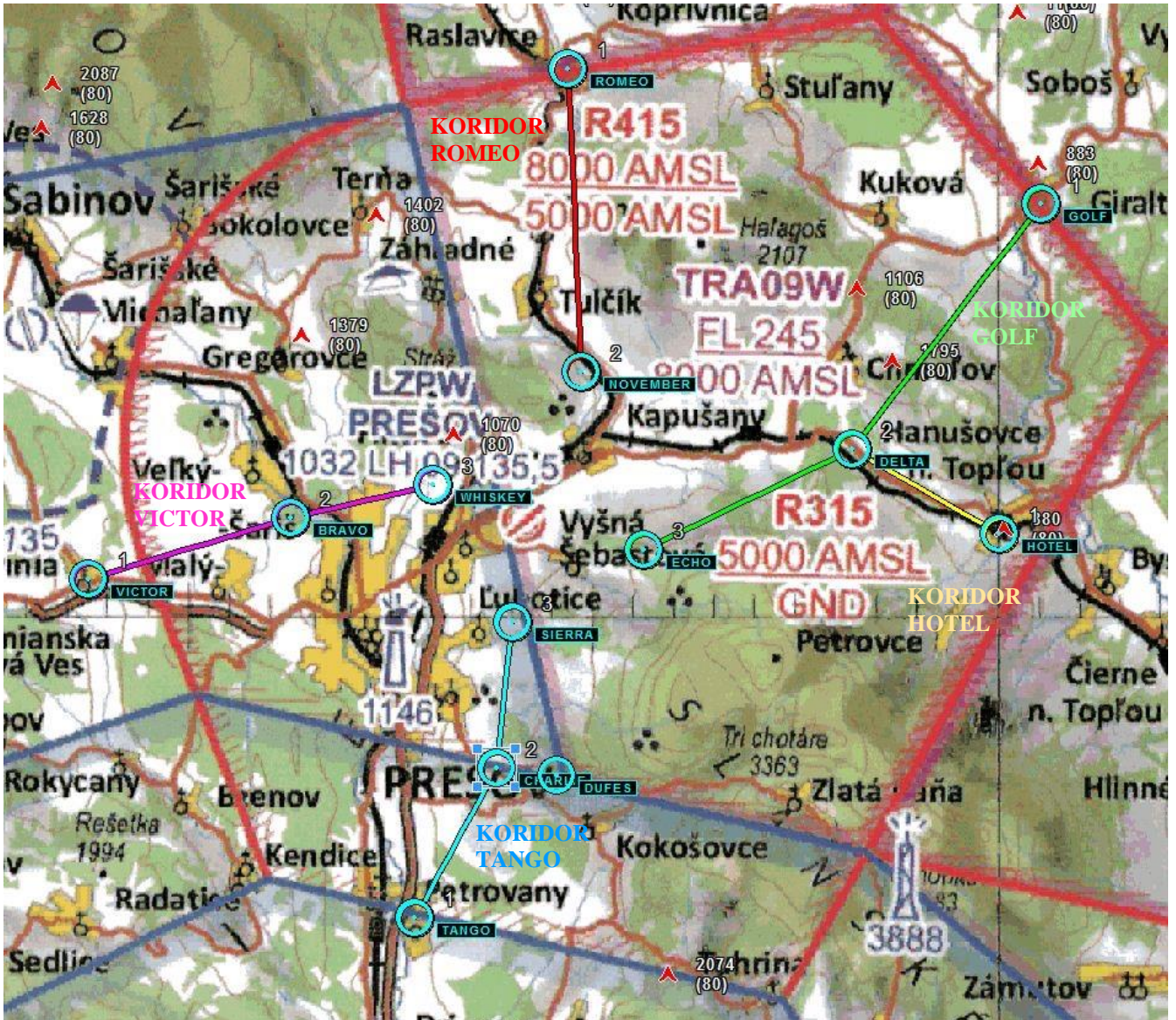


DEPARTURES ARRIVALS
 PREŠOV – VISUAL

49°01'36''N
 021°18'18''E

ELEV 1032 ft

TWR 135,500
 RWY 23



DEPARTURE/ARRIVAL ALTITUDE (ft/m MSL)	
Departure	Arrival
2 500 ft	3 000 ft

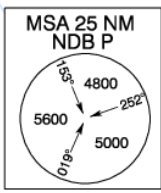
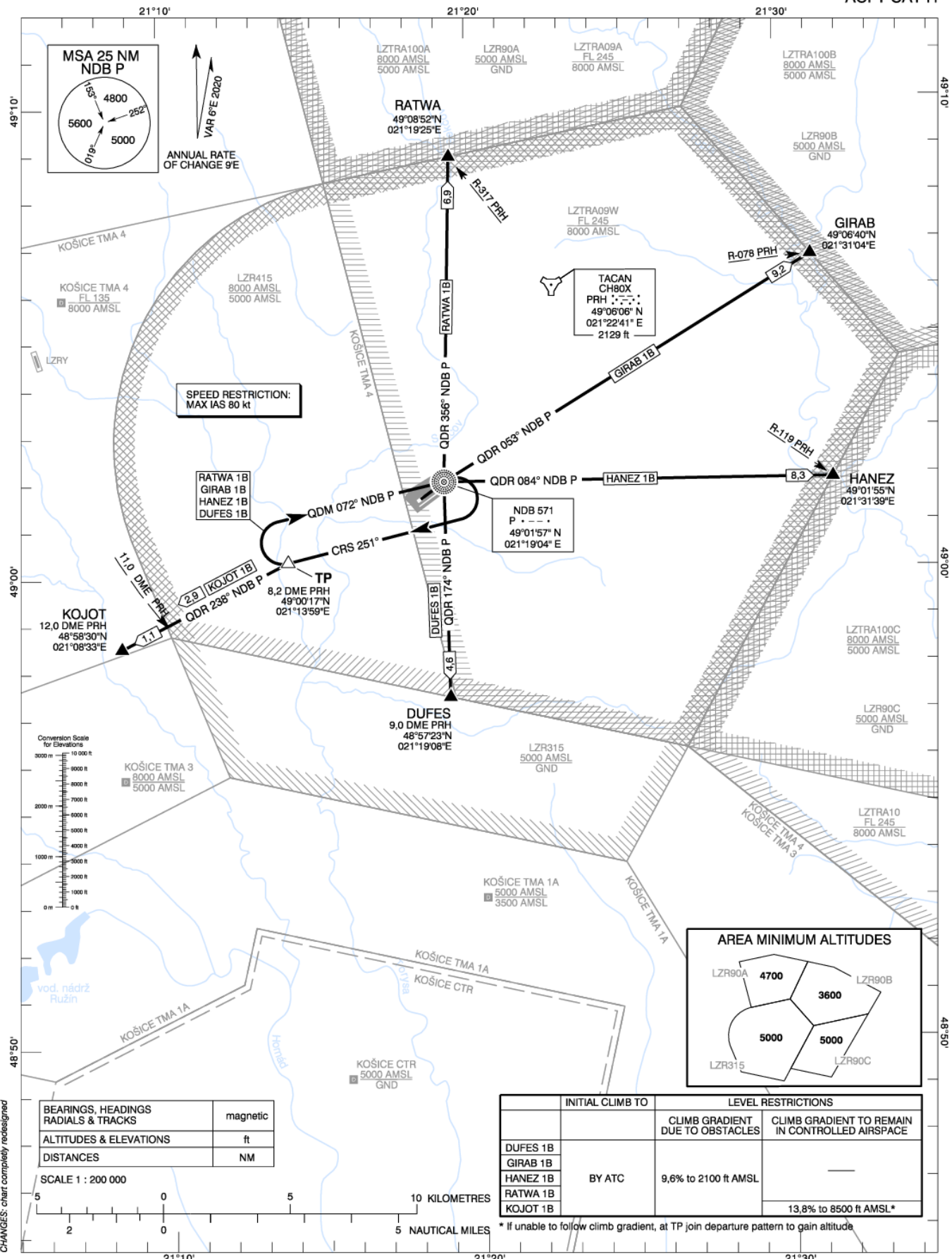
SID RWY 05 - CAT H

STANDARD DEPARTURE CHART -
INSTRUMENT (SID) - ICAO

PREŠOV (LZPW)
SID RWY 05
ACFT CAT H

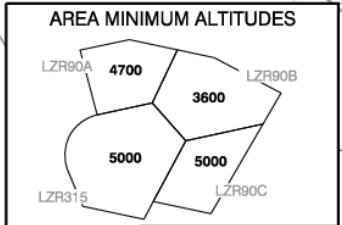
TRANSITION ALTITUDE
10 000 ft

PREŠOV RADAR 134,325
PREŠOV VEŽA 135,500



ANNUAL RATE OF CHANGE 9E
VAR 6°E 2020

SPEED RESTRICTION:
MAX IAS 80 kt



BEARINGS, HEADINGS RADIALS & TRACKS	magnetic
ALTITUDES & ELEVATIONS	ft
DISTANCES	NM

SCALE 1 : 200 000



	INITIAL CLIMB TO	LEVEL RESTRICTIONS	
		CLIMB GRADIENT DUE TO OBSTACLES	CLIMB GRADIENT TO REMAIN IN CONTROLLED AIRSPACE
DUFES 1B	BY ATC	9,6% to 2100 ft AMSL	—
GIRAB 1B			
HANEZ 1B			
RATWA 1B			
KOJOT 1B			
			13,8% to 8500 ft AMSL*

* If unable to follow climb gradient, at TP join departure pattern to gain altitude

CHANGES: chart completely redesigned

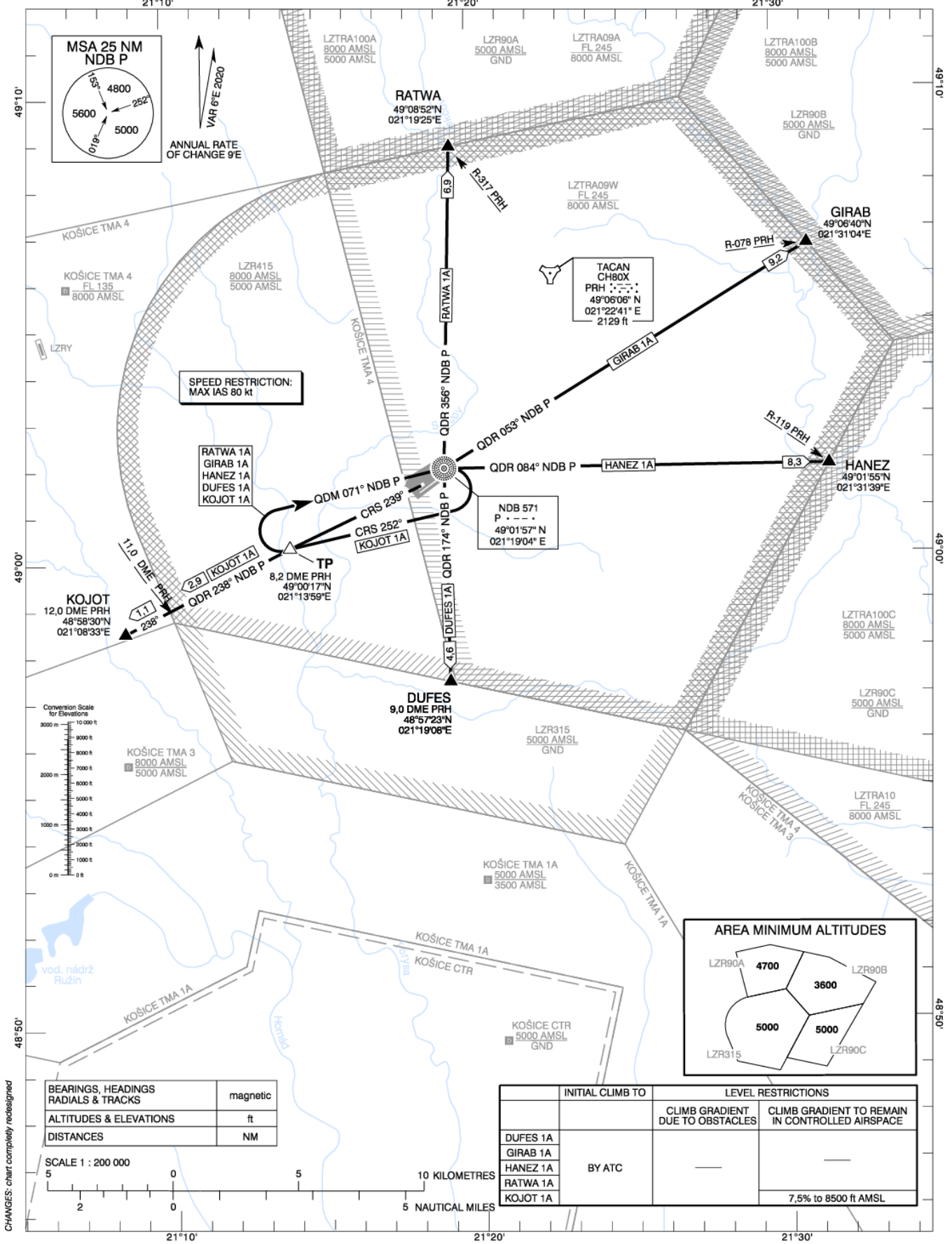
SID RWY 23 - CAT H

STANDARD DEPARTURE CHART -
INSTRUMENT (SID) - ICAO

TRANSITION ALTITUDE
10 000 ft

PREŠOV RADAR 134,325
PREŠOV VEŽA 135,500

PREŠOV (LZPW)
SID RWY 23
ACFT CAT H



CHANGES: chart completely redesigned

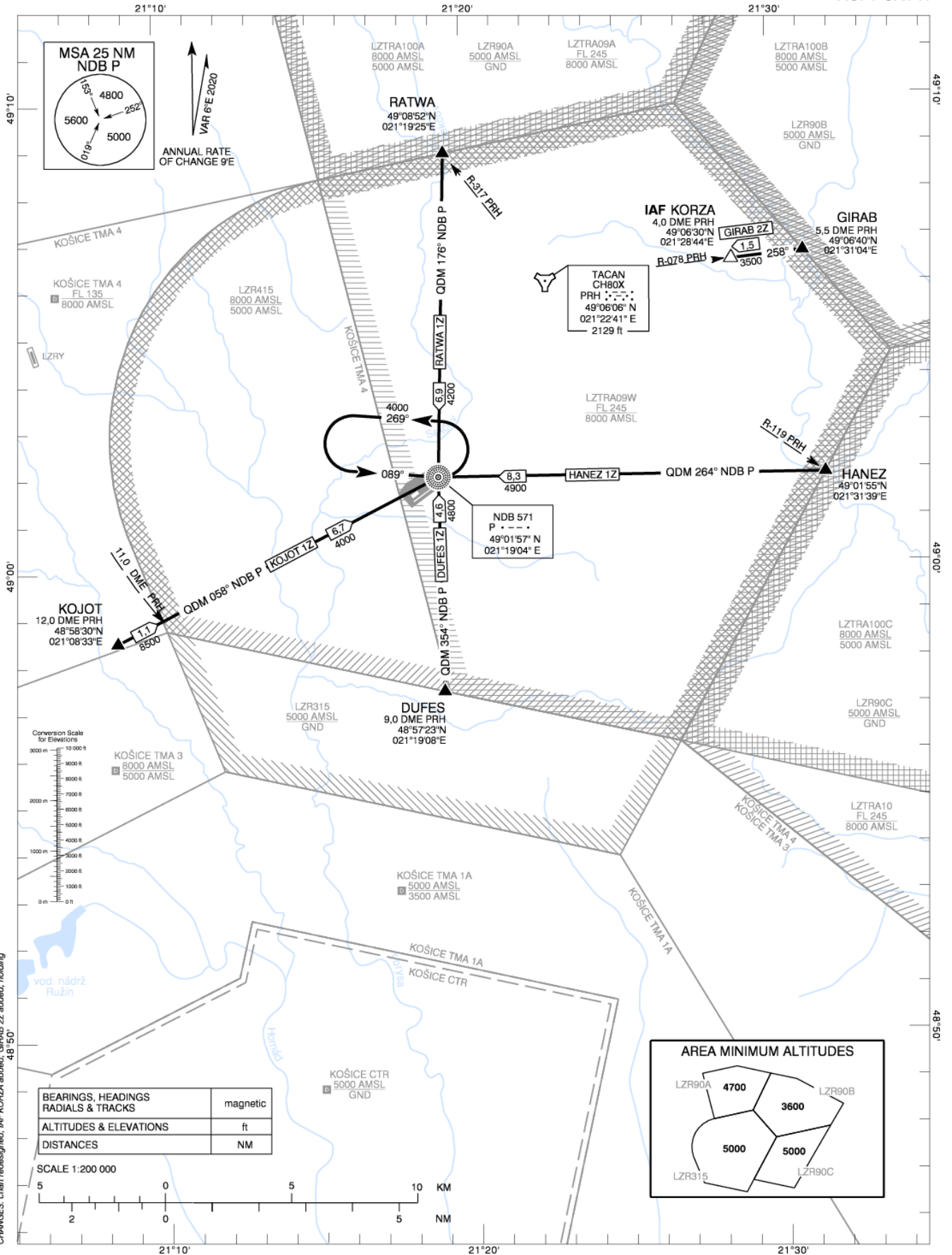
STAR RWY 23 – CAT H

STANDARD ARRIVAL CHART -
INSTRUMENT (STAR) - ICAO

PREŠOV (LZPW)
STAR RWY 23
ACFT CAT H

TRANSITION ALTITUDE
10 000 ft

PREŠOV RADAR 134,325
PREŠOV VEŽA 135,500



CHANGES: chart redesigned; IAF KORZA added; GIRAB 2Z added; holding 48 150

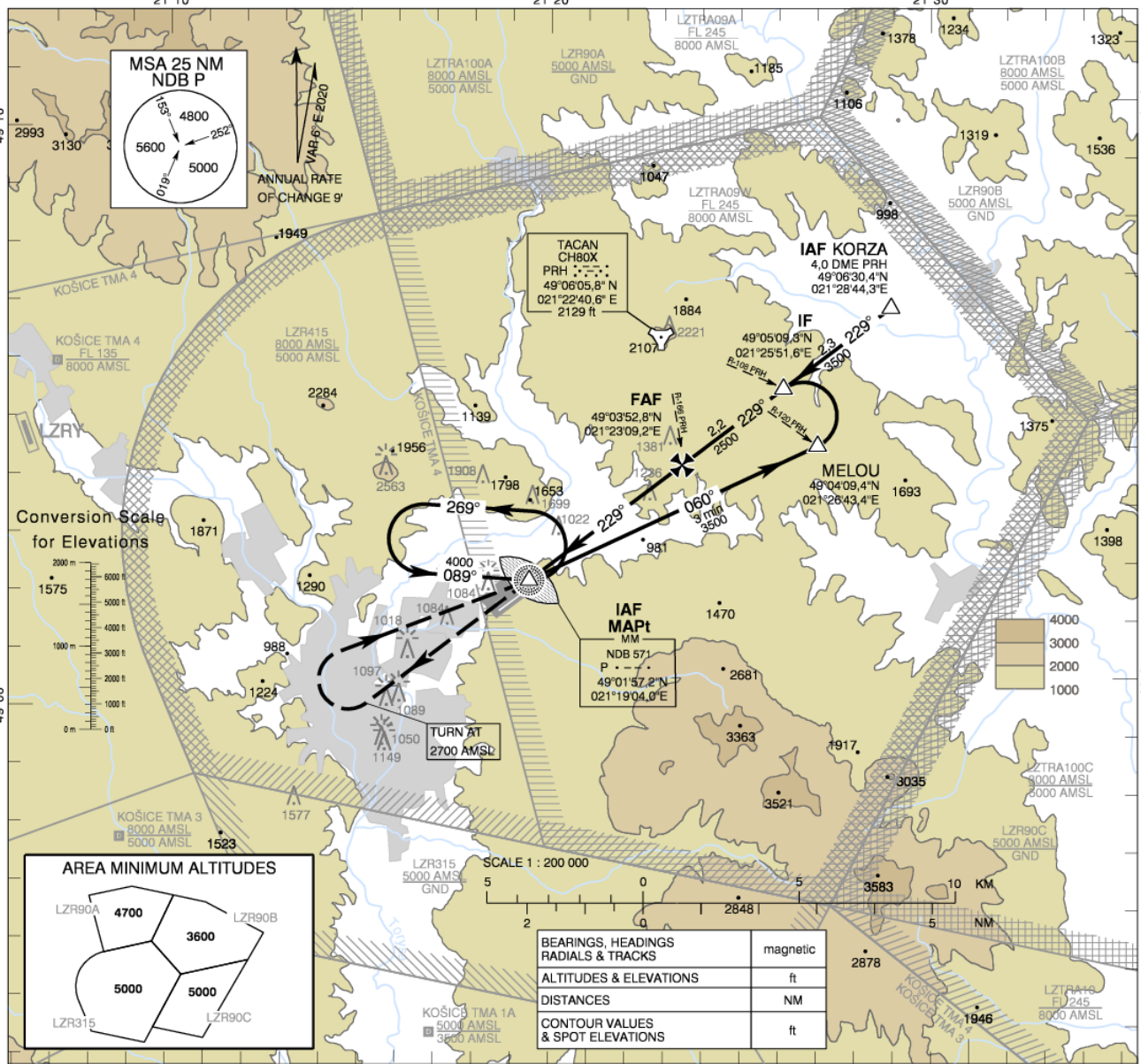
NDB RWY 23 – CAT H

INSTRUMENT
APPROACH
CHART - ICAO

TRANSITION ALTITUDE
10 000 ft
AD ELEV 1032 - 38 hPa
THR RWY 23 ELEV 1035 - 37 hPa

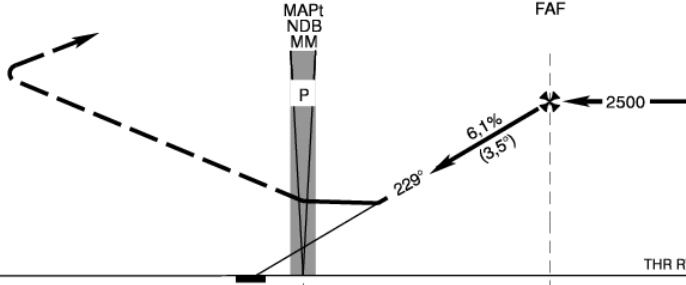
PREŠOV VEŽA 135,500
PREŠOV PRECISION 397,050
PREŠOV RADAR 134,325

PREŠOV
NDB RWY 23
ACFT CAT H



MISSED APPROACH

Climb STRAIGHT AHEAD, at 2700 AMSL
turn right to NDB P,
climbing to 4000 AMSL and hold.
No turn before NDB P.



OCA (OCH)	H
Straight - in Approach	ft 1860 (828)

Ground speed	kt	70	90	100	110
FAF - MAPt (3,3 NM)	min:sec	2:50	2:12	1:59	1:48
Rate of descent (6.1%)ft/min		434	557	619	681

Timing not authorized for defining the MAPt.

CHANGES: all airspaces redesigned; procedure redesigned; MSA: MAG VAR; precision frequency; call sign; IAF KORZA added; FAF coordinates; IF coordinates; FAF coordinates; MM and IAF added; AREA MINIMUM ALTITUDES; IAF NDB changed to MELOU

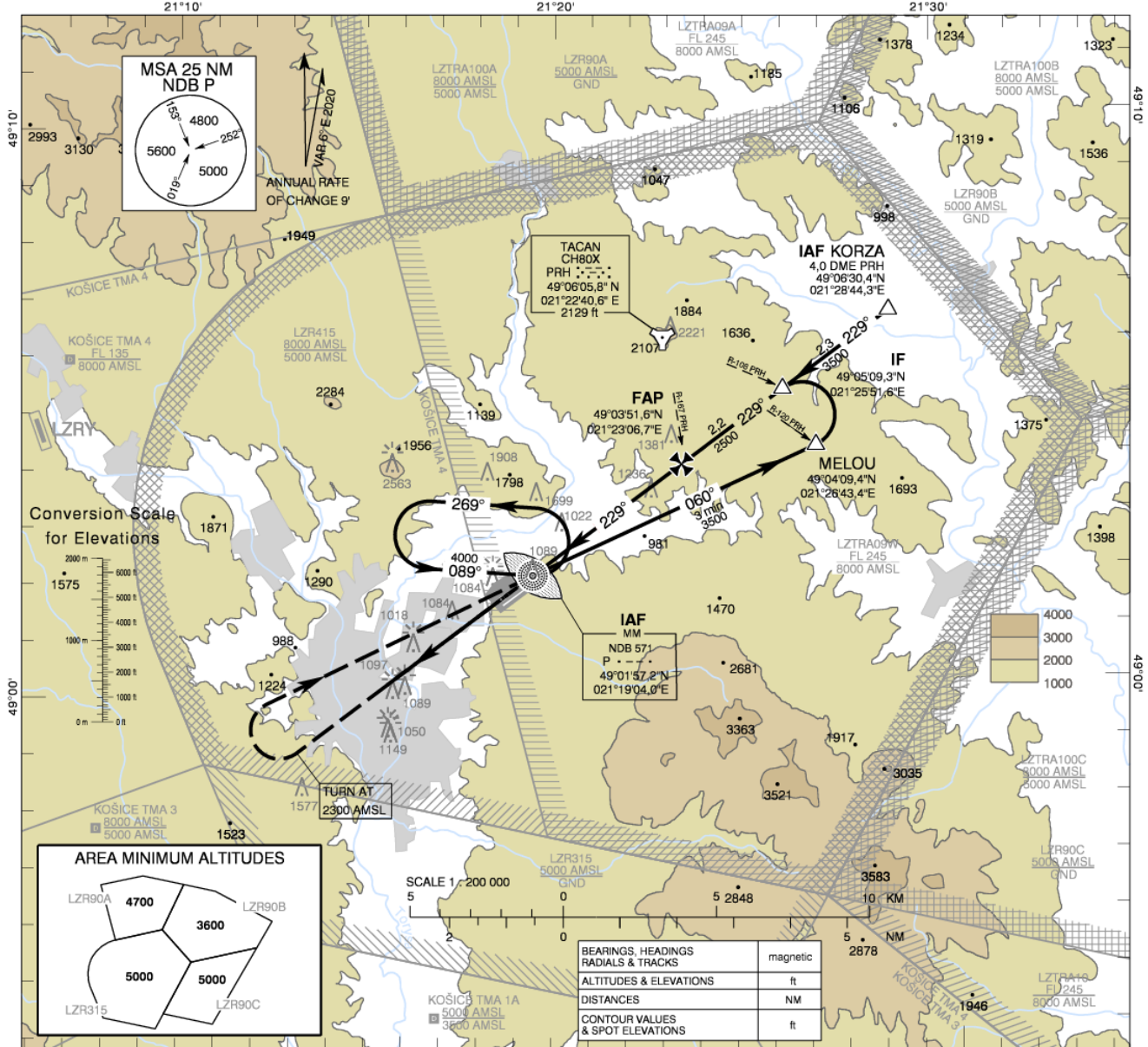
PAR RWY 23 – CAT H

INSTRUMENT
APPROACH
CHART - ICAO

TRANSITION ALTITUDE
10 000 ft
AD ELEV 1032 - 38 hPa
THR RWY 23 ELEV 1035 - 37 hPa

PREŠOV VEŽA 135,500
PREŠOV PRECISION 397,050
PREŠOV RADAR 134,325

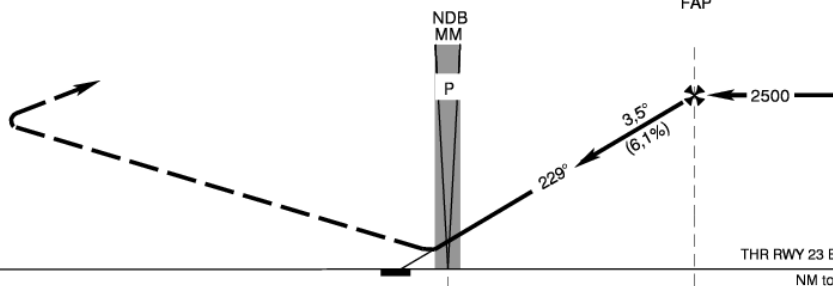
PREŠOV
PAR RWY 23
ACFT CAT H



MISSED APPROACH

Climb STRAIGHT AHEAD, at 2300 AMSL turn right to NDB P, climbing to 4000 AMSL and hold. No turn before 6,2 DME PRH.

TCH 35



OCA (OCH)	H
Straight - in Approach	ft 1235 (200)

Ground speed	kt	70	90	100	110
Rate of descent (6.1%)	ft/min	434	557	619	681

Timing not authorized for defining the MAPt.

CHANGES: new chart

VISUAL APPROACH CHART

AD 2-LZPW48-1
20 APR 23

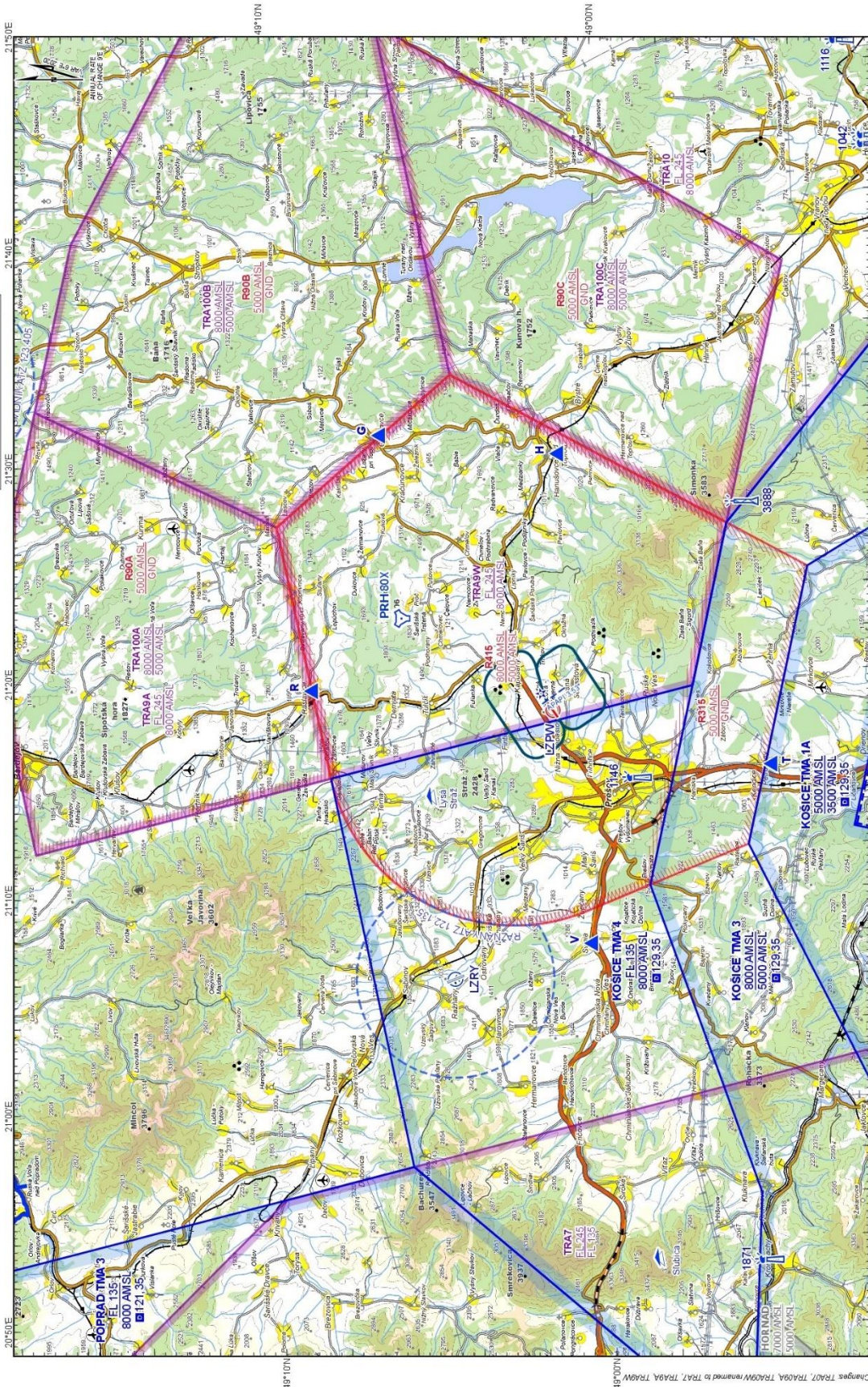
MIL-IP SLOVENSKÁ REPUBLIKA
MIL-IP SLOVAK REPUBLIC

VISUAL APPROACH CHART - ICAO

ARP 49°01'36"N 021°18'18"E
AD ELEV 1035 ft

PREŠOV PRECISION
PREŠOV RADAR
PREŠOV VEZA

PREŠOV (LZPW)



CONVERSION SCALE
for HEIGHTS or ELEVATIONS

SCALE 1 : 200 000

BEARINGS: magnetic
ALTITUDES & ELEVATIONS: ft
CONTOUR VALUES & SPOT ELEVATIONS: ft

0 10 000 20 000 40 000 Feet
0 2 500 5 000 10 000 Meters

0 2 4 6 8 km
0 2 4 8 NM

VOJENSKÁ LETECKÁ INFORMÁČNÁ SLUŽBA
MILITARY AERONAUTICAL INFORMATION SERVICE

MIL-IPAMDT 039

ATC SURVEILLANCE MINIMUM ALTITUDE CHART - ICAO

ATC SURVEILLANCE MINIMUM
ALTITUDE CHART - ICAO

TRANSITION ALTITUDE
10 000 ft

PREŠOV RADAR
PREŠOV VEŽA 134,325
135,500

PREŠOV (LZPW)
SSR Mošník (singletrack)

